

# “Empowering Excellence in Education”

## Corporate Profile

### Content

- 01 Our Mission
- 02 Vision
- 03 About Us
- 04 Our Expertise
- 05 Our Commitment
- 06 Our Impact
- 07 Contact Us:



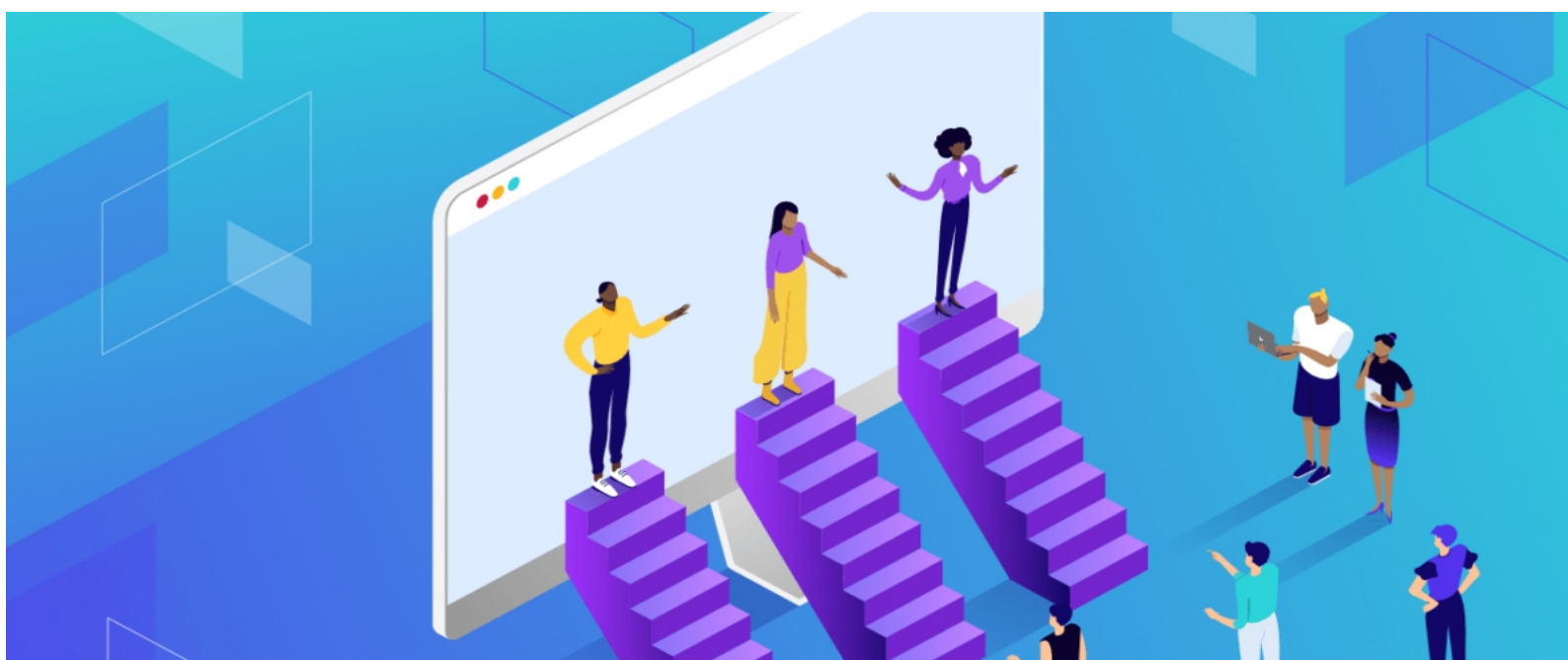
### Our Mission

“QRSE is dedicated to transforming education through innovative solutions, evidence-based research, and collaborative partnerships, empowering institutions to deliver exceptional learning experiences and achieve excellence in student outcomes.”



### Vision

Our vision is to be the global leader in education quality and research, aspiring to cultivate a generation that understands the true purpose of life and reaches their full potential.



### About Us:

About Us: QRSE is a pioneering organization that leverages cutting-edge research, innovative technologies, and strategic consulting to empower educational institutions. As part of Leading Edge Academic Network (LEAN) a group of companies, we harness the group's global reach and expertise to deliver tailored solutions. Our comprehensive services include curriculum design, educational materials development..Additionally, our School Inspection Services foster a culture of monitoring and evaluation, ensuring continuous improvement and accountability.





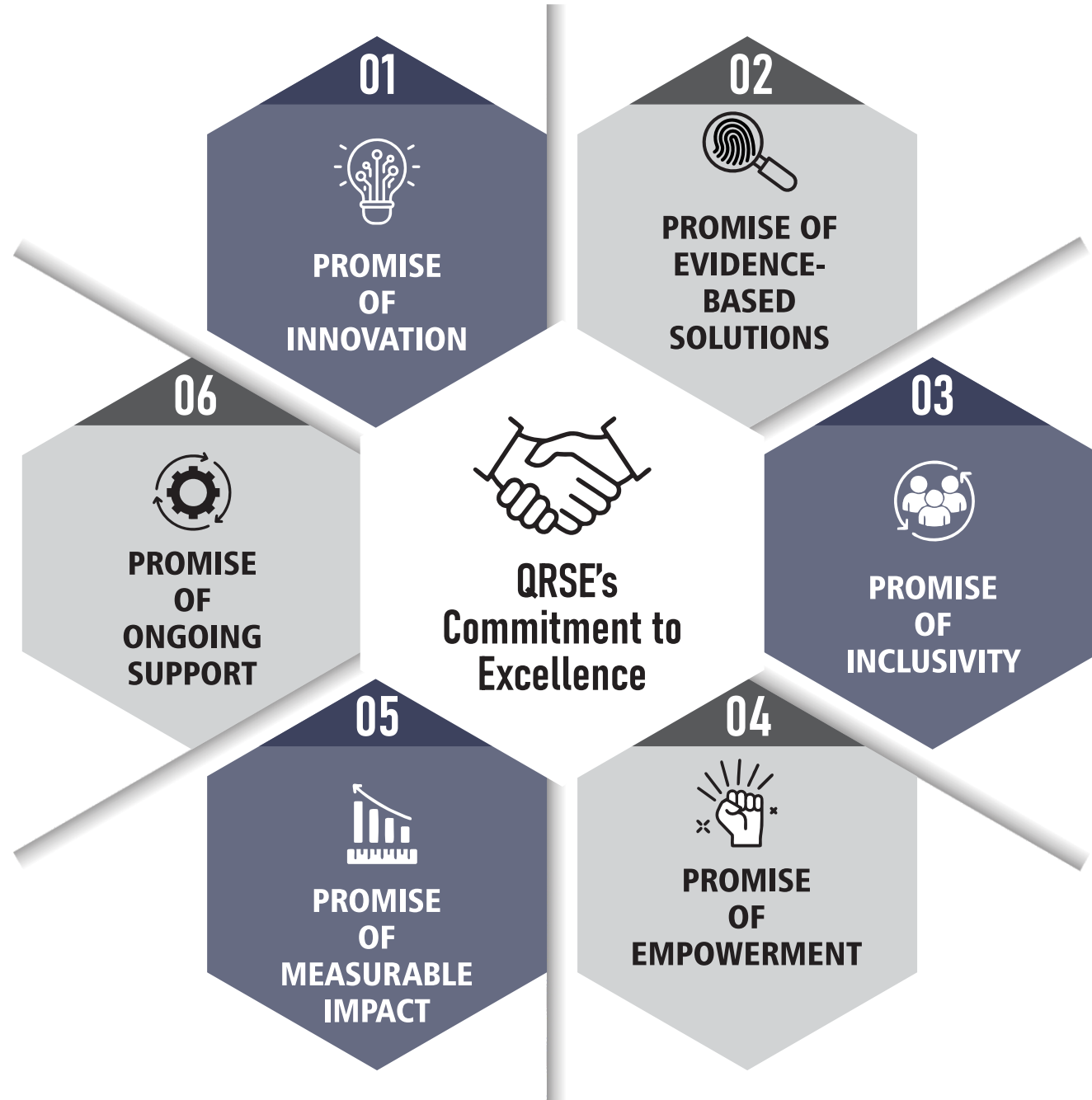


# Our Expertise:

- Educational research and analysis
- Innovative educational technologies
- Strategic consulting services
- Professional development programs
- Data analytics and assessment tools
- School Inspection Services



# Our Commitment



# Our Impact:

"QRSE transforms education by improving student outcomes, enhancing institutional efficiency, and increasing access to quality education. We empower educators and learners, driving sustainable growth and continuous improvement through innovative solutions, research, and partnerships."



# Contact Us:

**Website:** [www.qrseinternational.com](http://www.qrseinternational.com)

**Email:** [qrse.international@gmail.com](mailto:qrse.international@gmail.com)

**Phone:** +92 311 3991666

**Join the QRSE Community**

COMPANY CO.

